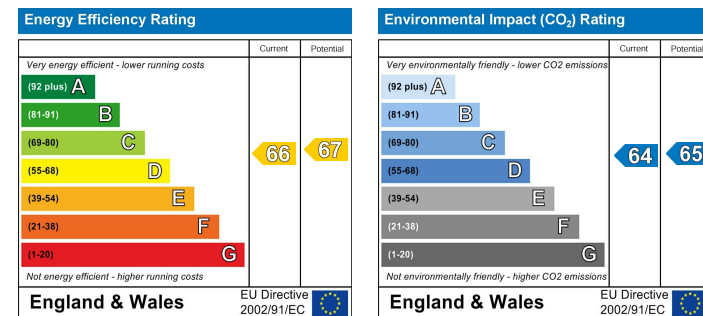


Location

Location Map



EPC Graph



Important Note

Centro Residential Sales and Lettings limited have not tested any services, heating system, electrical system, appliances, fixtures and fittings, that may be included in this property and would advise interested parties to satisfy themselves as to their condition or investigating the presence of any deleterious materials.

Viewing: Strictly by appointment through:

CENTRO RESIDENTIAL SALES AND LETTINGS LIMITED

Tel: 020 8401 5000

E-mail: residential@centro.plc.uk

See a selection of our properties at www.centro.plc.uk

£1,500 Per Month - 10th February 2025

Hemingford Road, Sutton, Surrey SM3 8HL



Description

- Mansion Block
- Second Floor
- Two Bedrooms
- Spacious Lounge
- Furnished
- Parking
- EPC Rating D
- Council Tax Band C

Features

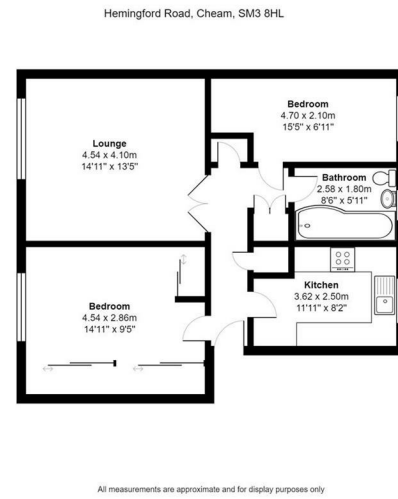
- Electric Heating
- New Windows
- New Carpets

What you need to know

- Term: 12 months
- Rent: £1500pcm exclusive of bills
- Security deposit: £1730.00
- Council Tax Band C
- Energy Rating D



Floor Plan



For illustration purposes only



All dimensions and measurements are approximate and for guidance only.

Just Centro's Opinion...

A well presented and modern two bedroom purpose built apartment by North Cheam and moments from Nonsuch Park. This second floor apartment boasts a spacious lounge with living and dining space, two double bedrooms, a fitted kitchen and a stylish fully tiled bathroom.

Benefits include electric heating, kitchen appliances, ample storage space, black out blinds, bathroom heater, communal gardens and residents parking.

You are a short walk away to North Cheam which hosts a range of shops, supermarkets and restaurants.

Offered mostly furnished and available in February.

Additional Photos

