



www.centro.plc.uk | Telephone 020 8401 5000
 www.christiesworld.com | Telephone 020 8643 7777

MAYFAIR OFFICE.CO.UK

onTheMarket.com

zoopla.co.uk

rightmove

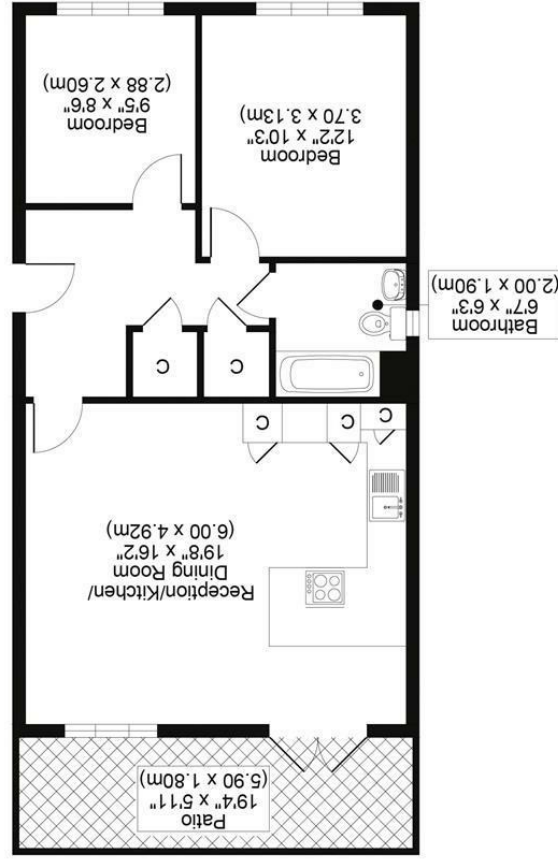
RICS

The Property Ombudsman

CHRISTIES

optica
 MEDA
 optimedia.co.uk

All measurements, walls, doors, windows, fittings and their appliances, their size and locations are shown conventionally and are approximate only and cannot be regarded as being a representation either by the seller or his agent.



ASH CLOSE, SM7
 TOTAL APPROX FLOOR PLAN AREA 710 SQ.FT (66 SQ.M)
 GROUND FLOOR



CHRISTIES



ASH CLOSE, BANSTEAD SM7 1BZ

GUIDE PRICE £375,000

GUIDE PRICE £375,000 - £400,000

NESTLED WITHIN A TRANQUIL PRIVATE CUL-DE-SAC, THIS DELIGHTFUL 2-BEDROOM GROUND FLOOR APARTMENT OFFERS A COMFORTABLE AND CONVENIENT LIFESTYLE. BOASTING A HARMONIOUS BLEND OF MODERN AMENITIES AND SERENE SURROUNDINGS, THIS PROPERTY IS PERFECT FOR FIRST-TIME BUYERS, DOWNSIZERS, OR ANYONE SEEKING A PEACEFUL RETREAT WITHIN EASY REACH OF LOCAL AMENITIES.

BUILT IN 2011, THE SPACIOUS LIVING AREA WELCOMES YOU WITH AN OPEN LIVING ROOM/KITCHEN, CREATING A HUB PERFECT FOR RELAXATION AND ENTERTAINING FAMILY AND FRIEND. PATIO DOORS OFFER DIRECT ACCESS TO THE COMMUNAL GARDENS.

TWO COMFORTABLE BEDROOMS OFFER PEACEFUL EVENING RETREATS WITH A WELL-MAINTAINED FAMILY BATHROOM WITH MODERN FIXTURES AND A BATHTUB, SHOWER OUTLET AND SCREEN, W/C, HAND BASIN, HEATED TOWEL RAIL AND UNDERFLOOR HEATING.

THE PROPERTY COMES WITH DESIGNATED PARKING, ENSURING CONVENIENCE FOR RESIDENTS AND VISITORS.

LEASE 112 YEARS
GROUND RENT 350 PER ANNUM
ANNUAL MAINTENANCE 2099 PER ANNUM

- 2 BEDROOM GROUND FLOOR APARTMENT
- LOCATED IN A PRIVATE CUL DE SAC
- ALLOCATED PARKING
- COUNCIL TAX BAND D
- EPC RATING C

