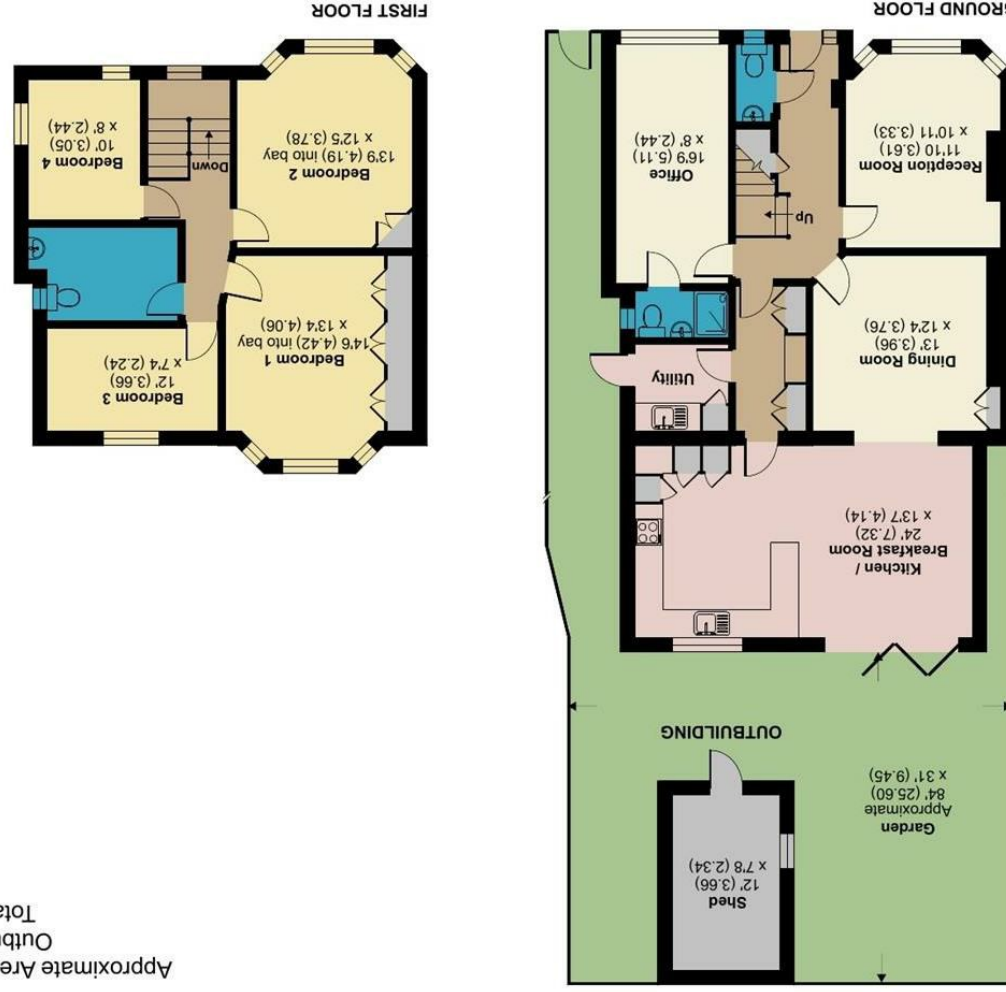




Floor plan produced in accordance with RICS Property Measurement Standards incorporating International Property Measurement Standards (IPMS2 Residential). © nchecom 2024. REF: 1092566



Approximate Area = 1769 sq ft / 164.3 sq m
 Outbuilding = 96 sq ft / 8.9 sq m
 Total = 1865 sq ft / 173.2 sq m

Fairholme Road, Chesham, SM1



FAIRHOLME ROAD, SM1 2EE

OFFERS IN THE REGION OF
£1,000,000

A SUPERBLY EXTENDED AND BEAUTIFULLY PRESENTED FIVE-BEDROOM SEMI-DETACHED FAMILY HOME QUIETLY SITUATED ON A SOUGHT-AFTER ROAD CLOSE TO LOCAL SCHOOLS, SHOPS, TRANSPORT LINKS AND OPEN SPACES. THIS WOULD BE AN IDEAL HOME FOR ANYONE LOOKING FOR A "TURNKEY" HOUSE THAT IS IDEAL FOR A GROWING FAMILY. THE INCLUSION OF A GROUND FLOOR OFFICE/BEDROOM WITH EN-SUITE SHOWER ROOM ALSO MAKES THIS THE PERFECT HOME FOR THOSE LOOKING TO EITHER WORK FROM HOME OR TO HOST ELDERLY RELATIVES OR ANYONE WHO FINDS STAIRS A CHALLENGE. THIS IS A HOME THAT MUST BE SEEN IN ORDER TO BE FULLY APPRECIATED, SO CALL US TODAY TO RESERVE YOUR VIEWING APPOINTMENT.

- SUPERB EXTENDED SEMI-DETACHED HOME IN POPULAR LOCATION CLOSE TO CHEAM VILLAGE
- GENEROUS ACCOMMODATION PROVIDING UPTO FIVE BEDROOMS, AND WITH TWO BATHROOMS
- FINISHED TO A HIGH STANDARD THROUGHOUT - MUST BE SEEN
- EPC RATING C
- COUNCIL TAX BAND E

