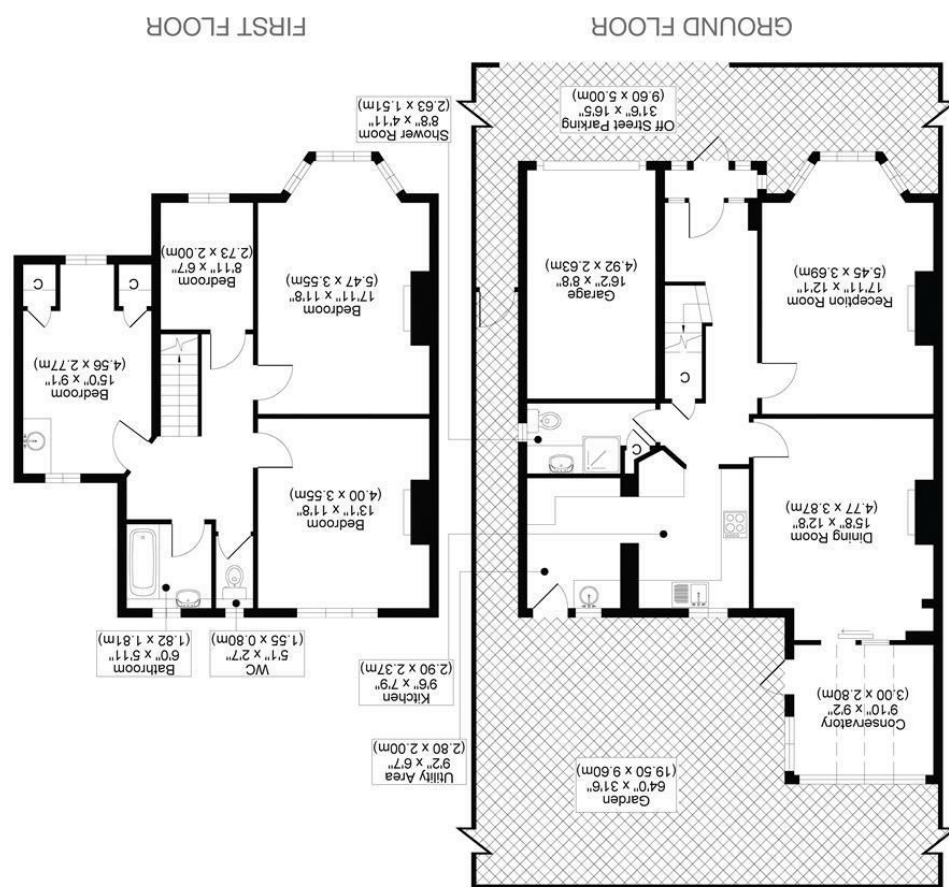




All measurements, walls, doors, windows, fittings and their appliances, their size and locations are shown conventionally and are approximate only and cannot be regarded as being a representation either by the seller or his agent.



TOTAL APPROX FLOOR PLAN AREA INCLUDING GARAGE 1707 SQ.FT (159 SQ.M)
 TOTAL APPROX FLOOR PLAN AREA EXCLUDING GARAGE 1560 SQ.FT (145 SQ.M)

QUARRY RISE, SM1



**** GUIDE PRICE £900,000 TO £925,000 ****

WELCOME TO QUARRY RISE, CHEAM - A CHARMING LOCATION FOR THIS STUNNING 4-BEDROOM SEMI-DETACHED HOUSE. SITUATED IN QUARRY PARK, THIS PROPERTY OFFERS A PERFECT BLEND OF TRANQUILLITY AND CONVENIENCE.

WITH SPACIOUS 4 BEDROOMS, THIS HOUSE PROVIDES AMPLE SPACE FOR A GROWING FAMILY OR THOSE WHO LOVE TO ENTERTAIN. THE PROPERTY BOASTS A CLASSIC BRITISH CHARM WITH A MODERN TOUCH, MAKING IT A DELIGHTFUL PLACE TO CALL HOME.

ONE OF THE STANDOUT FEATURES OF THIS PROPERTY IS ITS PRIME LOCATION. QUARRY RISE IS WITHIN WALKING DISTANCE TO BOTH CHEAM AND SUTTON MAINLINE TRAIN STATIONS, OFFERING EASY ACCESS TO LONDON AND BEYOND. ADDITIONALLY, THE AREA IS RENOWNED FOR ITS EXCELLENT LOCAL SCHOOLING, MAKING IT AN IDEAL CHOICE FOR FAMILIES WITH CHILDREN.

IMAGINE COMING HOME TO THIS BEAUTIFUL HOUSE, NESTLED IN THE SERENE QUARRY PARK, AFTER A BUSY DAY. WHETHER YOU'RE RELAXING IN THE WELL-APPOINTED LIVING SPACES, ENJOYING THE LANDSCAPED GARDEN, OR EXPLORING THE NEARBY AMENITIES, THIS PROPERTY OFFERS A LIFESTYLE OF COMFORT AND CONVENIENCE.

DON'T MISS OUT ON THE OPPORTUNITY TO MAKE THIS WONDERFUL HOUSE YOUR NEW HOME. CONTACT US TODAY TO ARRANGE A VIEWING AND EXPERIENCE THE MAGIC OF QUARRY RISE FOR YOURSELF.

- 4 BEDROOM HOUSE
- POTENTIAL TO EXTEND (STPP)
- GREAT TRANSPORT LINKS
- OUTSTANDING LOCAL SCHOOLS
- COUNCIL TAX BAND F
- EPC RATING D

